



next slide →

Smart Shelf Talkers & Smart Bar

*The Smart, Sustainable
Way to Own the Aisle*

Are You Facing These Challenges?

Want to be the main attraction of the Aisle?



Need a Smarter way to manage your In-Store Ads?

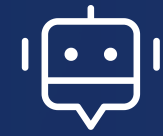


Need to Manage Store by Store Content?



Worried About the Planet?





You're One Click Away from Smarter, Sustainable Shelf Advertising with PopBlast

Make it Pop!

*In the crowded world of retail, grabbing attention is everything. Static Shelf Talkers have served their purpose, now there is a smarter, more powerful way to engage shoppers: **Video / Motion Content***



next slide



Solution: Smart Shelf Talkers & Smart Bar

Grabs Attention Faster
Boost Recall
& Recognition



Motion vs Still Content

- 5x Higher Attention
- 60% Better Recall
- 70% More Likely to Influence Purchases
- Boost Engagement 2-3 Times Longer than Static Signage
- ✓ Drive more attention and sales with video Smart. Sustainable. Effective.

Spark Emotional
Engagement



Engagement

- Tell Relatable Micro-Stories
- Engage Multiple Senses
- Emotion-Driven Messages
- Tap Into Timely Feelings
- Highlight Human Connection.
- ✓ The **sustainable way to engage.**

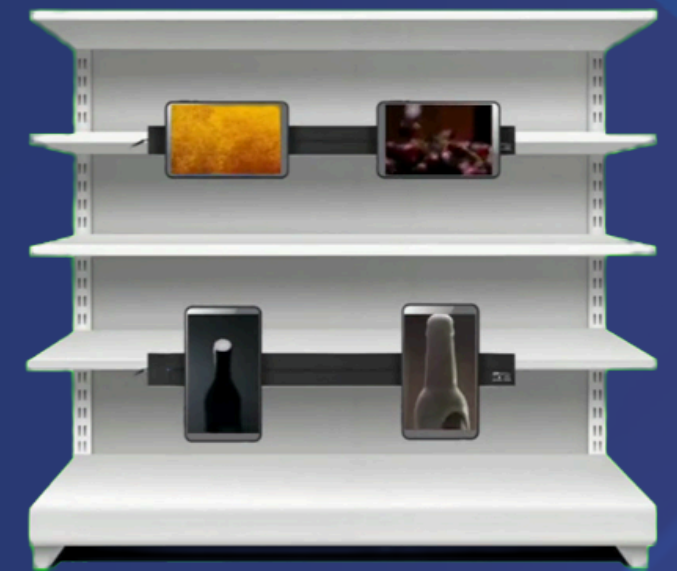
Remotely Control
All Point of Purchases



Free CMS Included

- Content Upload via Wifi / SD Card
- Photos & Videos
- Multiple Locations / Multiple Ads
- ✓ **Update content in real-time**
- Remotely Control your Point of Purchases
- Other Uses or Custom Apps CMS
- Charges Apply or Setup Charges

Eco-Conscious
Branding



Be Smarter & Greener

- ✓ Reduce waste, no more reprints
- Fewer Logistics & Materials
- Appeal to Consumers who value Sustainability
- Showcase your brand's values
- The sustainable way to engage, update, and stand out.

05

PopBlast

Single Smart Shelf Talker 8 Inches = 80 mm
& Smart Bar 40 cm = 400 mm



06

PopBlast

Double Smart Shelf Talker 8 Inches = 80 mm
& Smart Bar 80 cm = 800 mm





Take Control. Own the Shelf.
Drive the Sale

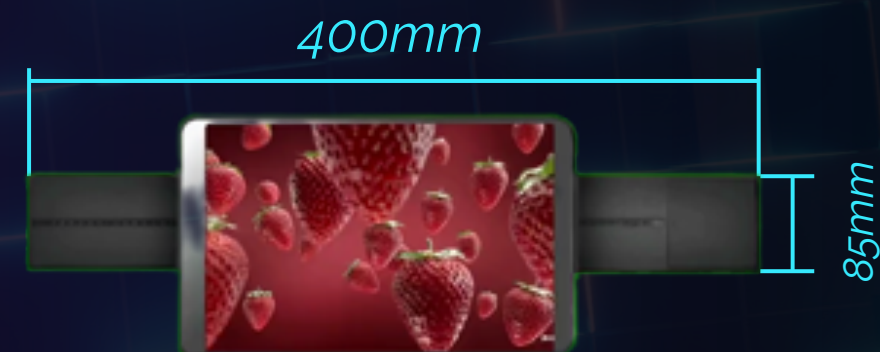
Smart Shelf Talkers & Smart Bar

Option 1:

Single Shelf Talker 8
Inch & Smart Bar 40cm

Option 2:

Double Smart Shelf
Talker 8 Inch + Smart
Bar 80cm



next slide



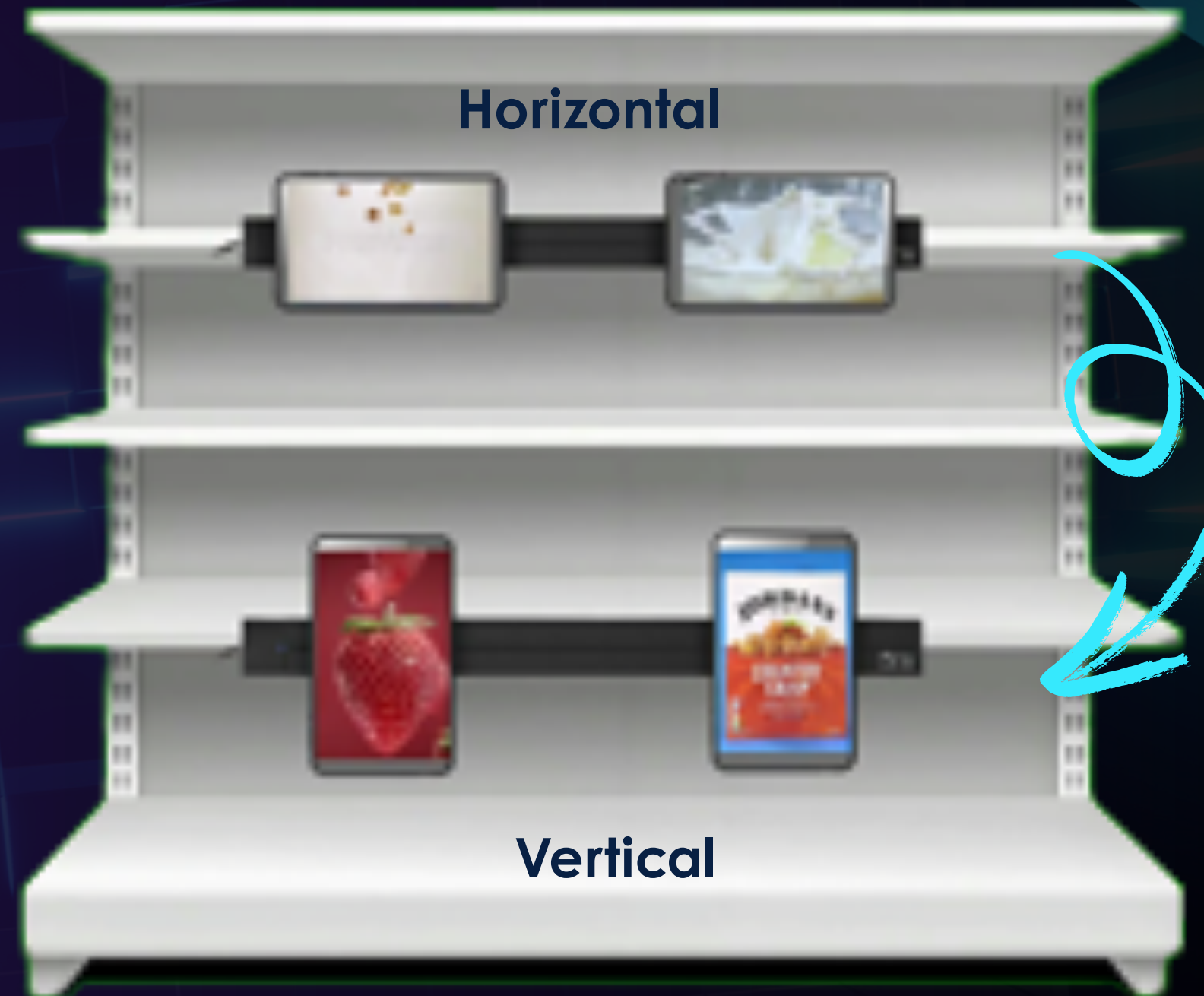
08

PopBlast

Smart Shelf Talker & Smart Bar



Horizontal & Vertical



09

PopBlast

Smart Shelf Talker & Smart Bar

Video / Motion Content grabs attention, builds emotion, and tells your brand's story in seconds — making Smart Shelf Talkers far more effective than static print.





Easy Content Upload



WIFI

*Connect to your WiFi
Network*



CMS

*Log In to our Free CMS
Content Management
System to Publish Videos
or Images*



CONTROL ALL

*Automatically Control All your
PopBlast Smart Shelf Talkers*

next slide



Designed for Ease of Use

1

Screw the Power Track Bracket onto the Shelf.



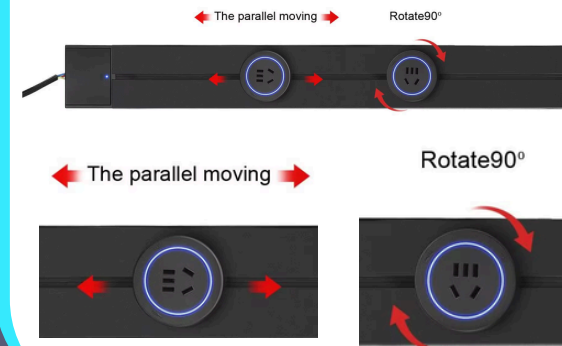
2

Screw and hang the tablet onto the socket bracket.



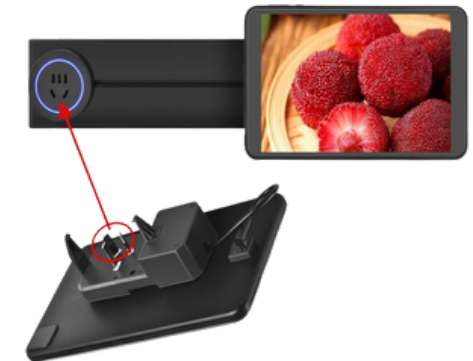
3

Rotate moveable socket 90 degrees to insert into the power Track.



4

Plug the shelf talker into the power track socket



5

Use the Type-C port as needed.



Installation Steps for PopBlast Smart Shelf Talker:

- (1) Screw the Power Track Bracket onto the shelf.
- (2) Screw and hang the tablet onto the socket bracket.
- (3) Rotate the moveable socket 90 degrees to insert it into the power track.
- (4) Plug the shelf talker into the power track socket.
- (5) Use the Type-C port as needed.



User Friendly

next slide

















Smart & Sustainable

12

Main Features

-  *Versatile Display* – Supports horizontal and vertical shelf configurations
-  *Universal Fit* – Compatible with shelf thicknesses under 55 mm
-  *Easy Power Control* – ON/OFF button integrated into power track
-  *Secure Installation* – Anti-theft screw-lock socket system
-  *Adjustable Positioning* – Moveable socket for flexible placement
-  *Retail-Ready* – Perfect for supermarkets, pharmacies, gift shops, and more
-  *Certified & Compliant* – CE, RoHS, and FCC approved
-  *Android* – Android 13, A133 Chip, RAM 3G+32G Storage
-  *LCD Touch Screen* – 800*1280
-  *Upload Content* – Via SD Card, Wifi
-  *Free CMS* – Content Management Software Uploads Videos & Motion Content
-  *Voltage* – 110 ~250V 50-60Hz, Max Current: 32A



next slide





PopBlast Smart Shelf Talkers & Smart Bar

Unboxing & Installation

Thank you for exploring the world of Pop Blast Smart Shelf Talkers & Smart Bar. For more information, please contact us at



info@targetprodr.com



+1(809)532-7316



targetpro.global

Shelf Talkers & Smart Bar

Smart Bar Power Track, Adapter and Accessories



01

Unboxing

Smart Bar 40cm Unboxing

Smart Bar Power Track, Adapter and Accessories

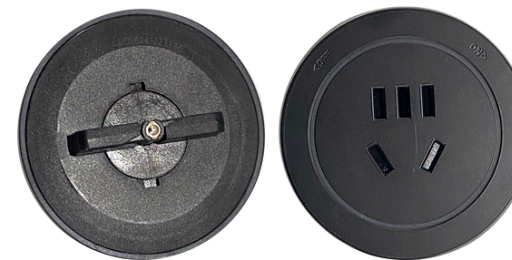


Smart Bar 400 mm = 40 cm



Adjustable Smart Bar Holders

2 Power socket adapter



PARTS:

- 1 Smart Bar Track 40cm**
- 2 Power Socket Adapter**
- 2 Adjustable Smart Bar Holders**
- 4 Dowel (tarugos)**
- 4 Screw (tornillos)**

**Unbox
& Enjoy**



02

Unboxing

Smart Bar 80cm Unboxing

Smart Bar Power Track, Adapter and Accessories



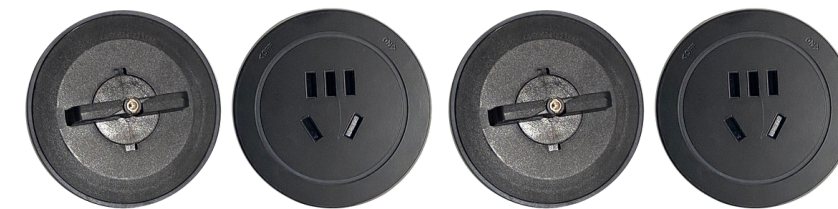
Smart Bar 80 mm = 80 cm



Adjustable Smart Bar Holders



4 Power socket adapter



PARTS:

- 1 Smart Bar Track 80cm*
- 4 Power Socket Adapter*
- 2 Adjustable Smart Bar Holders*
- 4 Dowel (tarugos)*
- 4 Screw (tornillos)*

*Unbox
& Enjoy*



03

Unboxing

Shelf Talkers Unboxing

Shelf Talkers (Tablets & Accesories)



Box



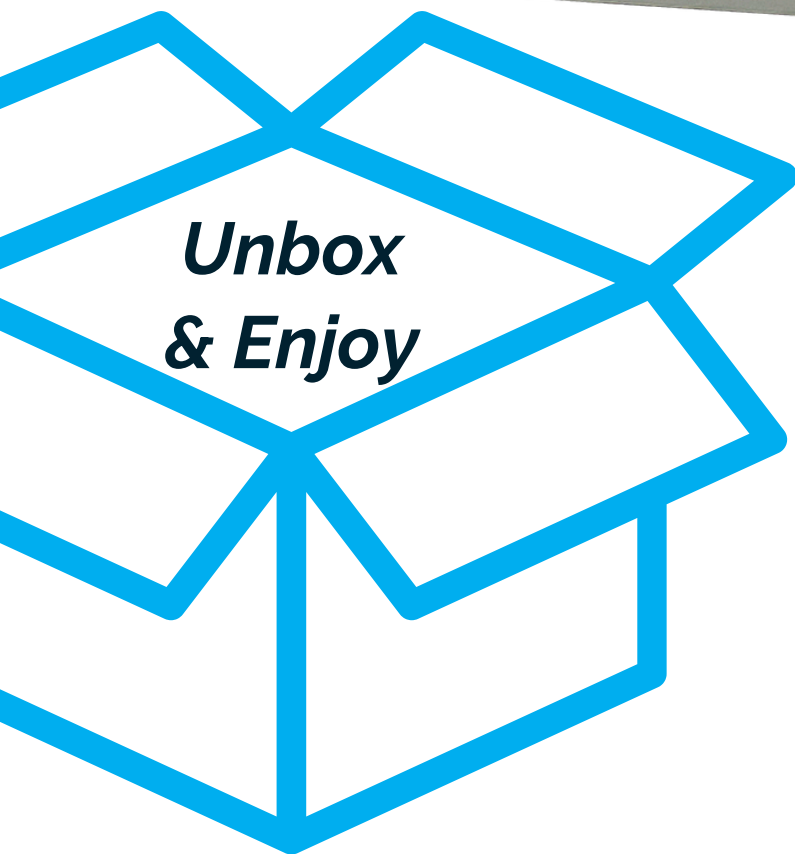
Smart Shelf Talker (front side)



Smart Shelf Talker (back side)



- Parts:**
- 1 Screw Driver**
 - 6 Screws**
 - 1 USB-C to USB-A Adpter**
 - 2 Tablet hook**
 - 1 Tablet AC Adapter**
 - 1 Tablet**



04

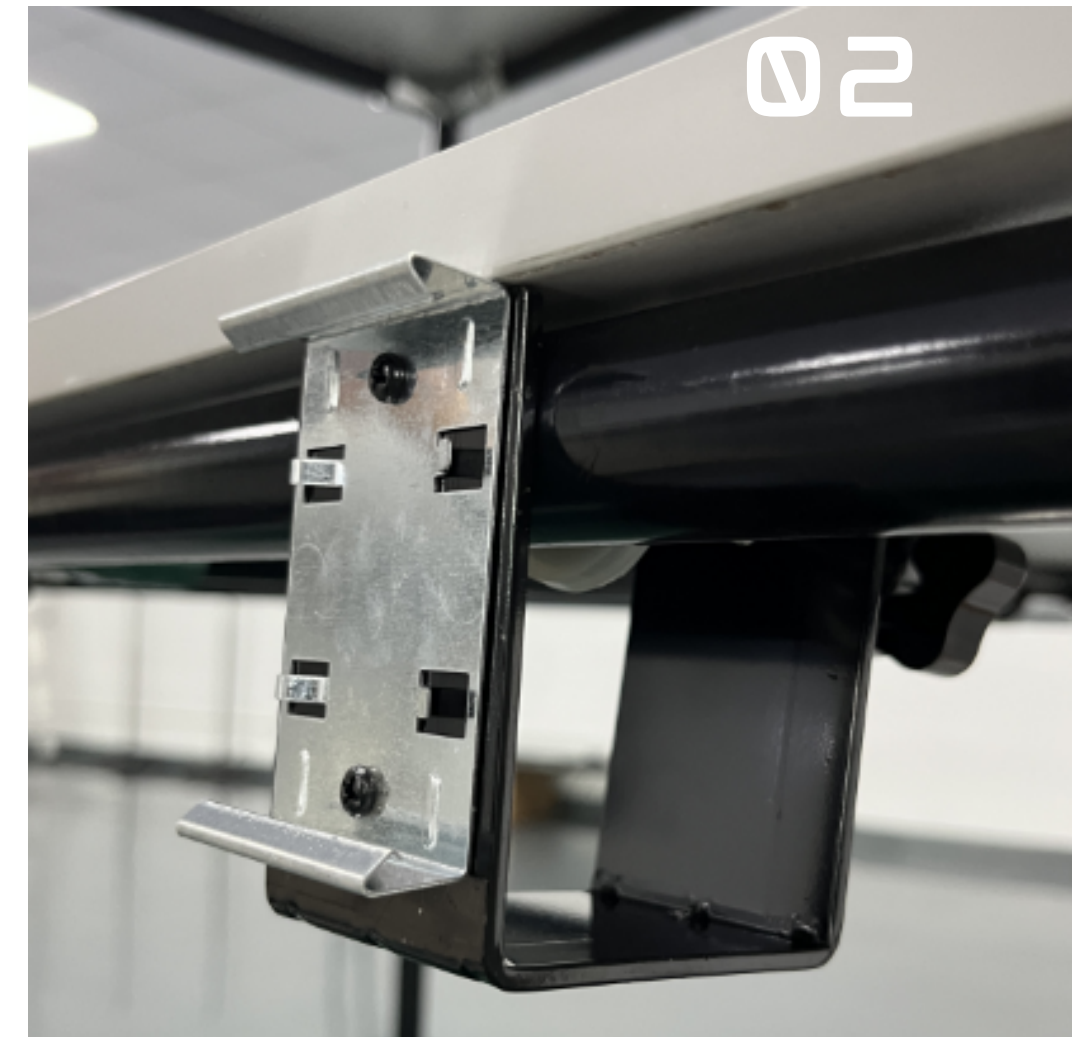
Unboxing

Shelf Talkers & Smart Bar

Mounting Smart Bar Holders on Shelves - 2 Methods



1- Standard Smart Bar Holder (Bracket) Position



2- Alternate Smart Bar Holder (Bracket) Position

If you prefer the configuration shown in the 2nd picture, simply:

Unscrew the brackets from their current position.

Adjust them to the desired location.

Secure them by tightening the screws.



05

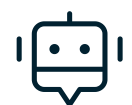
Installation

Shelf Talkers & Smart Bar

Adapter Installation Steps:



Insert and Rotate 90 degree Clockwise to “on” adapter



06

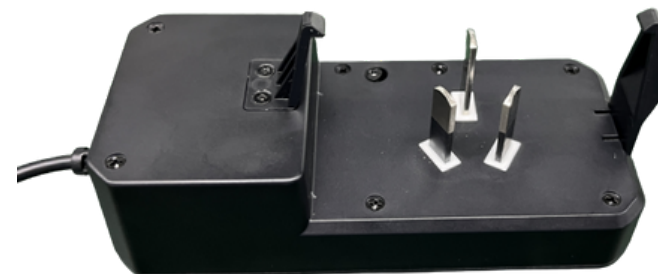
Installation

Shelf Talkers & Smart Bar

Tablet Installation



02



Vertical or Horizontal Shelf Talker Installation

You can install the display in either a vertical or horizontal orientation, as shown in the picture below.

Note: The camera must always be positioned at the top.

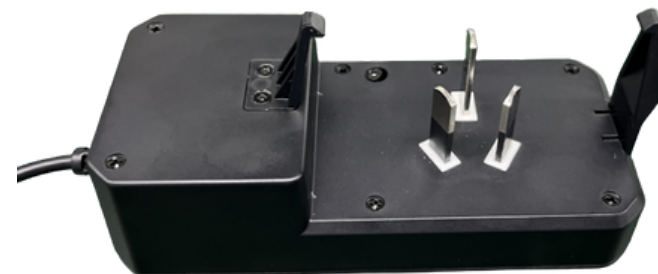


07

Installation

Shelf Talkers & Smart Bar

Tablet to Smart Bar Installation



Power Set Up - Plug In the Adapter

- 1- Plug in the Adapter to the power track to secure the connection.
(Please refer to the video instructions for visual guidance.)
- 2- Press the On/Off Button to turn on the tablet and start the display





Bring Your Shelves to Life – Request a Quote

Thank You!

Thank you for exploring the world of Pop Blast Smart Shelf Talkers & Smart Bar. For more information, please contact us at



info@targetprodr.com



+1(809)532-7316



targetpro.global